



Release Information

Allocare AMS & Allocare WEB

Release 22.9

December 2022

Copyright and Comments

Copyright (c) 2022 by Allocare AG, Kantonsstrasse 3, CH-6246 Altishofen/Switzerland.

www.allocare.com

info@allocare.com

Information contained in this document was carefully written after thorough research and has been reviewed for correctness. Nevertheless mistakes can occur. If one is encountered, we kindly request you to report to Allocare Support for rectification. In no event Allocare AG, or any employees of Allocare AG, shall be liable for any damages arising out of mistakes or misunderstandings contained in the information of this document.

The name Allocare and the Allocare logo are trademarks of Allocare AG, Altishofen. Other hardware and software product names referenced in this document are trademarks of the respective company.

This document or any part of it is not allowed to be distributed or reproduced in any form without the explicit consent of Allocare AG.

Introduction

This Release Information describes the most important new functionalities delivered by Allocare AMS & Allocare WEB Release 22.9. The delivery of the software releases is handled via support or project managers.

For additional information regarding the functionality, please contact our support or our sales:

Support

Phone: +41 62 748 65 55

Mail: support@allocare.com

Sales

Phone: +41 62 748 65 65

Mail: sales@allocare.com

Contents

Allocare AMS	4
Allocare ESG	4
Customizable Ribbons	5
New Order Editor.....	7
Report Explorer	8
Balance List.....	9
Include in Inventory	10
Allocare WEB	11
WEB Next - Redesign Look & Feel	11
System Requirements	12
Installation Requirements	13

OVERVIEW

Allocare AMS

Allocare ESG

ESG is becoming increasingly important in your investment process. Our new module offers everything from standardized data loads to predefined calculations to check and report sustainability criteria against regulatory and client requirements at any time.

Customizable Ribbons

You can now add, change and remove tabs, groups and commands to customize the ribbons the way they are most useful for you. A list of commands, which are not yet included in the ribbon, shows you options which you might have missed. You can even rename the commands to the names you prefer.

New Order Editor

The existing Order Editors have been combined into a new multifunctional one. It uses the whole screen and displays all information at once while irrelevant sections can be hidden. The grouping and order of the fields as well as additional fields can now be configured according to client requirements.

Report Explorer

Clearly structured by topics, you can now explore the existing reports. For each standard report, you get a short informative text about its content and a preview gives you an idea of its visualization. The new search function filters what you are looking for across all topics.

Balance List

How did an account balance or position change over a period? This new function lists all transactions that led to a change. Similar to the transaction list, you can see all inflows and outflows. You can start the query for the corresponding position directly from the Analysis Tree.

Include in Inventory

Which order statuses do you want to include in your analysis? The previous option to simulate decided orders has been extended. You can now select each individual order status separately for consideration in the tree. Of course, you can also save the settings in your templates.

Allocare WEB

WEB Next - Redesign Look & Feel

We are working on the next generation of Allocare WEB, which is dedicated to modernization and functionality. Clear instructions, new color schemes and visual design elements will provide a better overview and usability. Allocare WEB will be expanded in the future to include functionalities such as Order Management and CRM.

System Requirements

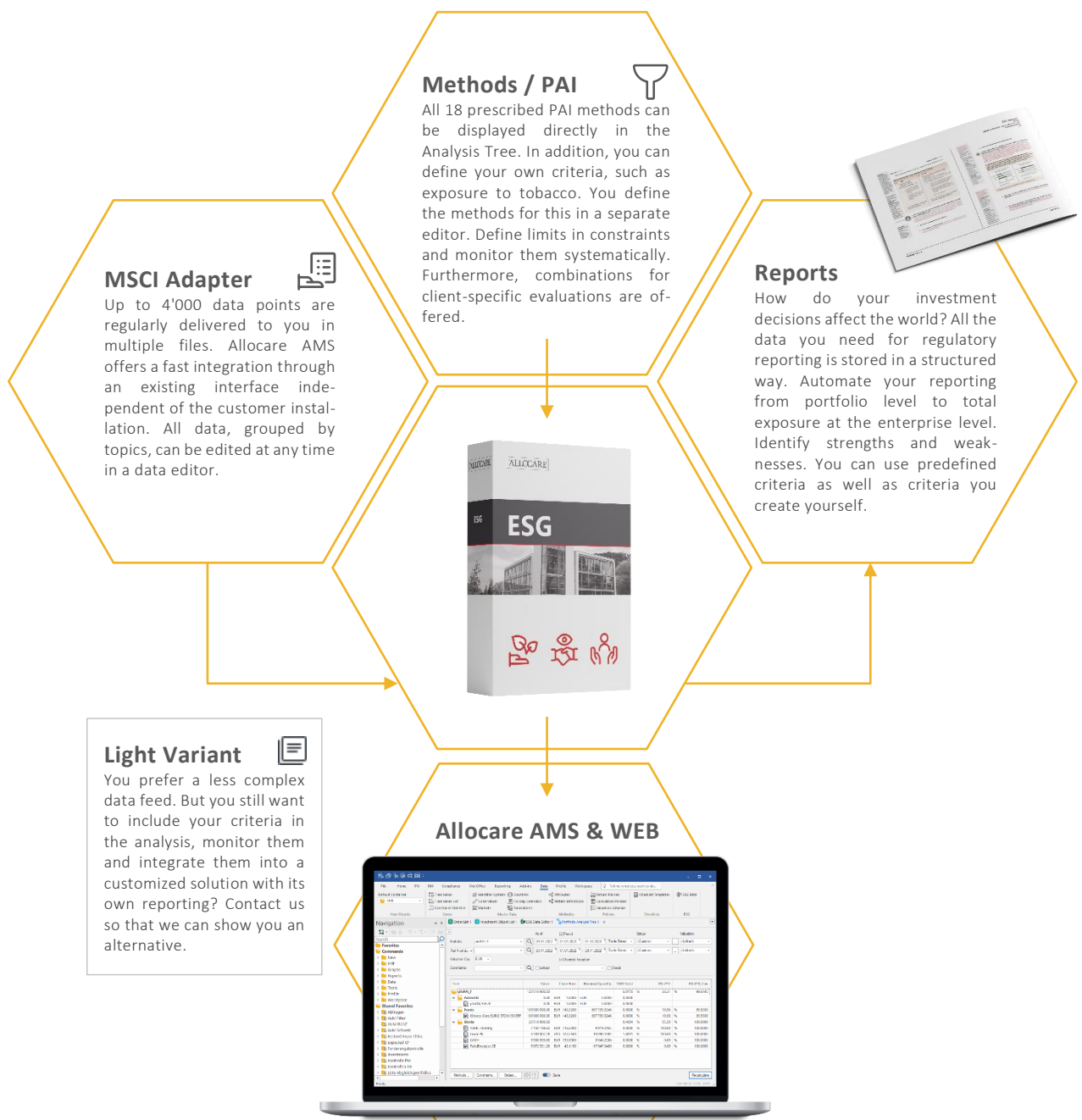
Important information about operating system, database management system, web server, web browser.

Allocare AMS

Allocare ESG

With the Allocare ESG Module, it is possible to integrate sustainability into your investment process and at the same time cover the regulatory requirements. From the investment idea to the implementation and reporting, you have the sustainability criteria and their changes under control at all times. Define with your clients the relevant sustainability criteria and the targets to be achieved. The Allocare ESG module in Allocare AMS shows you the way to the sustainable investment universe.

Thanks to the integration of the ESG data into the existing investment process, the sustainability criteria can be easily combined with the existing investment restrictions.



Customizable Ribbons

With 22.3 we removed menu lists and replaced them by ribbons. To fit your daily needs you can now customize the ribbon by changing tabs and adding new ones. You can also deactivate complete tabs, which will not be shown anymore. Within the tabs, you can reorganize commands by regrouping them and adding ones, which were not shown yet. A list of commands, which are not in the ribbon, shows you tools which you might have missed. You can even rename the commands to the names you prefer.

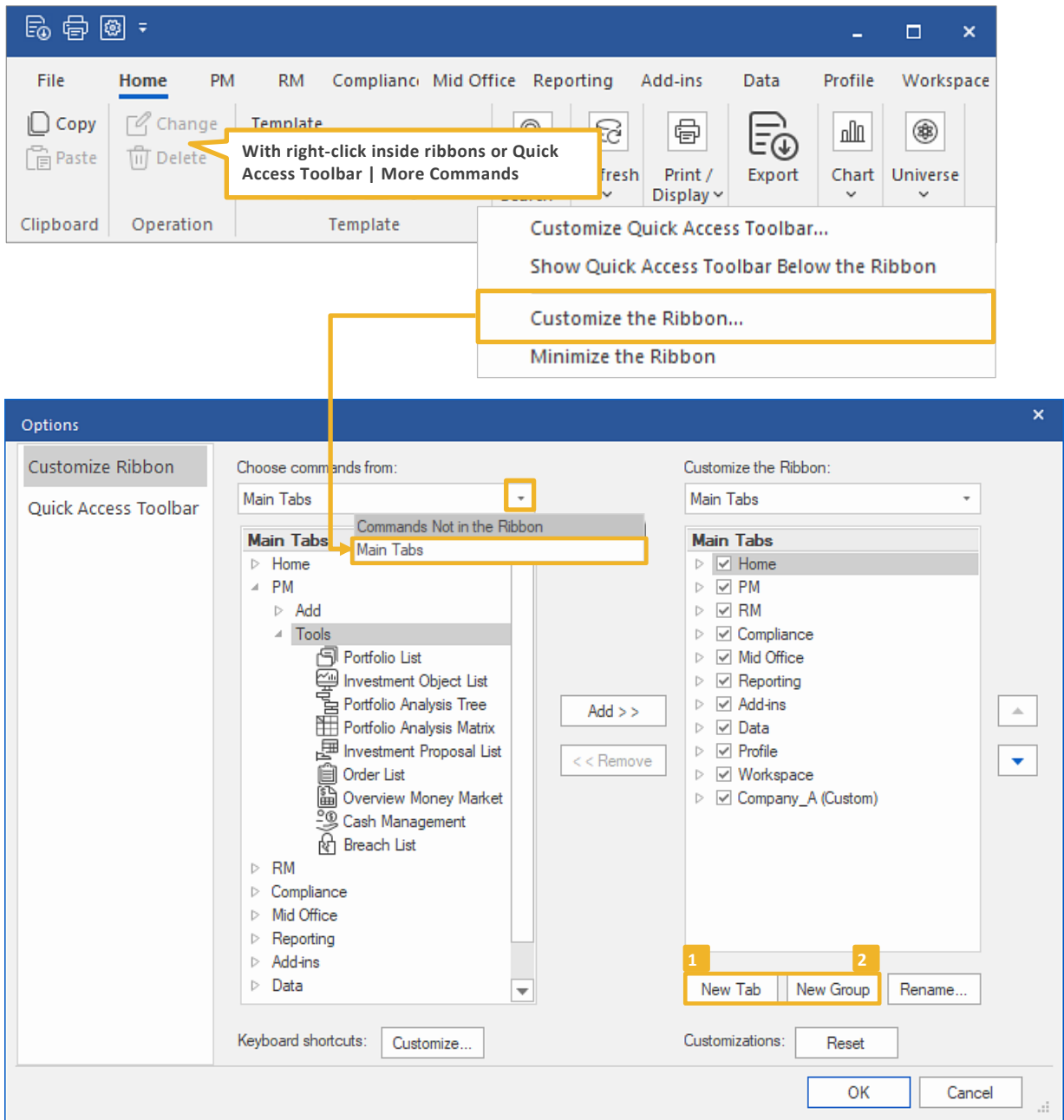


Figure 1: How to customize Ribbons

- 1 **New Tab:** results in a new ribbon category similar to the personas PM, RM, etc.
- 2 **New Group:** using group, different panels can be arranged and organized.

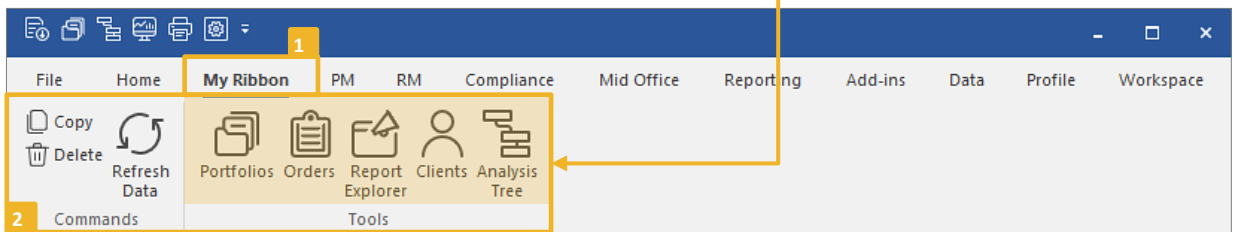
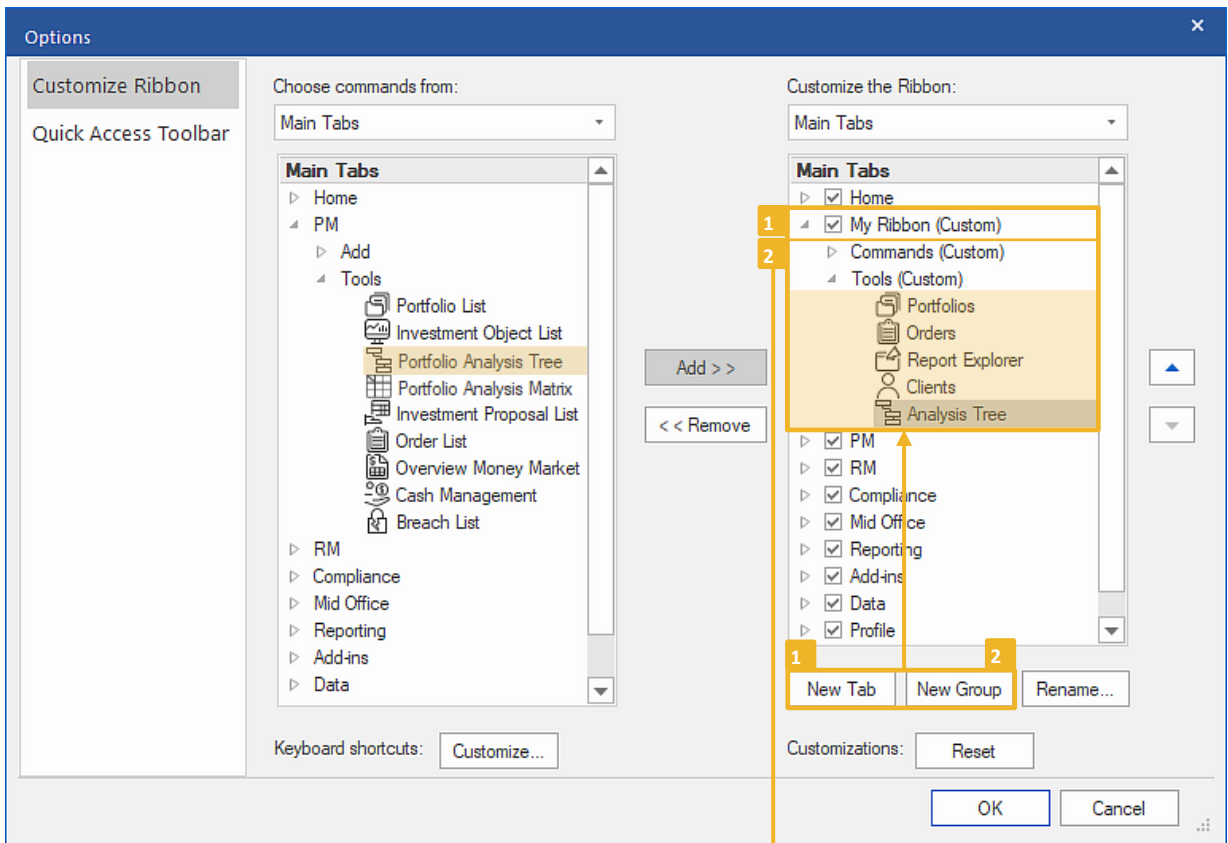


Figure 2: Customized Ribbon

New Order Editor

New Order Editors show all information on one page. It is no longer necessary to scroll through tabs. Individual sections that are not relevant can be hidden to show only the necessary fields. All editors now appear in the same window. Opening different windows at the same time is no longer necessary. Both the grouping and the display of individual fields can now be configured according to client requirements.

On one Page
Customizable Order Editors,
everything you need on one
page

**Stationary section with
the summary**

**Sections can be displayed
collapsed or expanded**

+ Expand All
- Collapse All

The screenshot displays a software window titled "Change Securities Order - AMS-21514". The main content area is titled "2'700 Credit Suisse Group Namenakt" and shows a "Buy" order for "Portfolio 1" in "CHF" with a price of "8'340.3". The interface is organized into several sections: "General" (Portfolio, Purpose), "Investment" (Investment, Quantity), "Investment Details" (Current Price, Accrued Interest, Dirty), "Instructions" (Type, Price, Stop Limit, Executed, Trader), "Origin" (Order Date, Placed By, Contact, Order), "Routing", "Settlement", "MiFID", "Notes", and "System". A left sidebar contains expandable sections for "General", "Investment", "Investment Details", "Instructions", "Origin", "Routing", "Settlement", "MiFID", "Notes", and "System". A bottom navigation bar includes buttons for "OK", "Validate", "Submit", "History", and "Apply". Callouts highlight the "On one Page" concept, a stationary summary section, and the ability to expand/collapse sections.

Figure 3: Order Editor, General Page

Report Explorer

- 1 Navigate through the reports in a folder structure, just as you do in your File Explorer. For each folder, the included reports are displayed with details. This way you can manage a large number of reports.
- 2 You are not sure in which folder the report you are looking for is located. Use the search by keyword to display all possible reports.
- 3 If you select a report, a short description will appear next to it. This includes its purpose, a list of available methods and charts. Below you will see a preview in the Allocare standard layout, so you can visualize the report. The question mark at the bottom of the preview will take you to the relevant page in the report manual. All three components (description, preview and manual) can be changed in the report definition. In this way, you can also store them for reports you have created yourself.

Figure 4: Report Explorer

A new reporting layout has been created, which can be seen in the Report Explorer examples. With release 24.9 this will be defined as standard. If you want to switch earlier, we will activate it on request.

Preview
In the preview window the selected module is described and displayed with an example of a report page

Note: For the migration of your existing reporting set to the new Stimulsoft Reporting Engine (Reporting 2.0), your account manager will contact you in the near future. Active and Crystal reporting engines will be decommissioned with release 24.9.

Balance List

The evolution of an account balance or position is just a click away. Based on the position in the Analysis Tree and the As-of-date, Allocare AMS lists the relevant inflows and outflows.

You have the same functions available as in the transaction list. You can access and edit transaction details, show additional methods or export the list.

The screenshot illustrates the workflow to generate a balance list. It starts in the 'Portfolio Analysis Tree' window, where the 'Account CHF' is selected in the tree. The 'Trx' button in the toolbar is clicked, opening the 'Search Transaction' dialog. In this dialog, the 'From' date is set to 01.01.2022 and the 'To' date is 29.11.2022. After clicking 'OK', the 'Balance List' window opens, displaying a table of transactions for the selected account and period.

Trade Date	Value Date	Status	Type	Investment	Debit	Balance
1 27.01.2022	31.01.2022	Executed	Purchase	2.50 CONF 16	75'780.00	424'220.00
2 24.02.2022	28.02.2022	Executed	Purchase	EMMI N	29'350.00	394'870.00
3 29.03.2022	31.03.2022	Executed	Purchase	ABB N	23'325.00	371'545.00
4 27.04.2022	29.04.2022	Executed	Purchase	ADECCO R	20'000.00	351'545.00
5 27.05.2022	31.05.2022	Executed	Purchase	FORBO HOLDING N	33'625.00	317'920.00
6 28.06.2022	30.06.2022	Executed	Purchase	GEBERIT R	23'475.00	294'445.00
7 27.07.2022	29.07.2022	Executed	Purchase	HUEGLI HLDG ARBON	28'000.00	266'445.00
8 31.08.2022	31.08.2022	Executed	Purchase	LINDT & SPRUENGLIN	21'260.00	245'185.00
9 30.09.2022	30.09.2022	Executed	Purchase	ORELL FUSSLI HLDGN	19'625.00	225'560.00
10 27.10.2022	31.10.2022	Executed	Purchase	SCHINDLER HLDG R	50'510.00	175'050.00

Figure 5: Balance List

Include in Inventory

Do you want to see orders that have already been released or sent to the broker only? Or do you can select different options for the portfolio and reference portfolio, which allows you to compare your portfolio with and without orders.

In the Analysis Tree, you can now select the considered order states individually. Depending on the progress of the orders, positions are highlighted in a different color.

The settings can be saved in your templates. The previous option 'Decided Orders' is taken over.

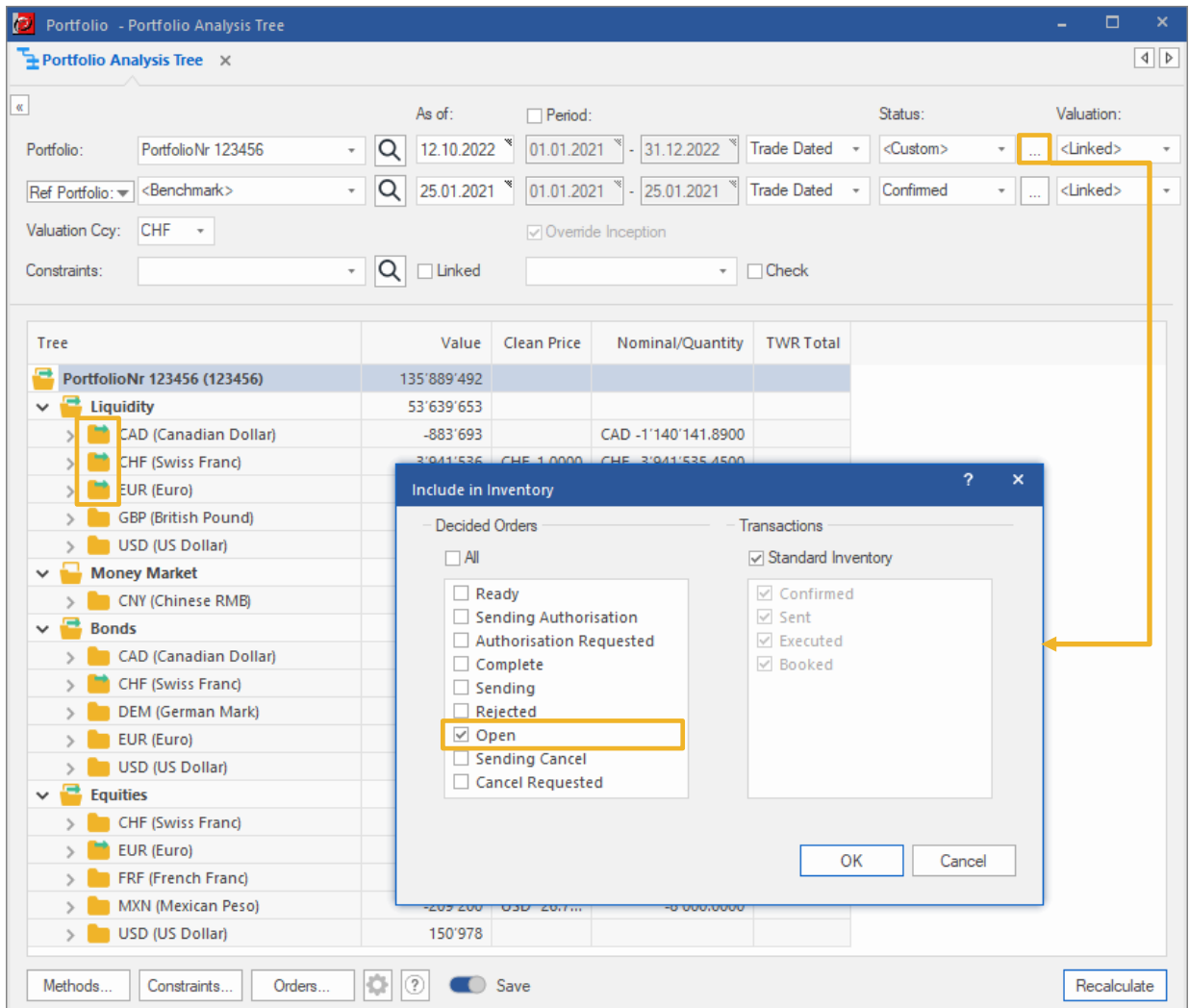


Figure 6: Include in Inventory

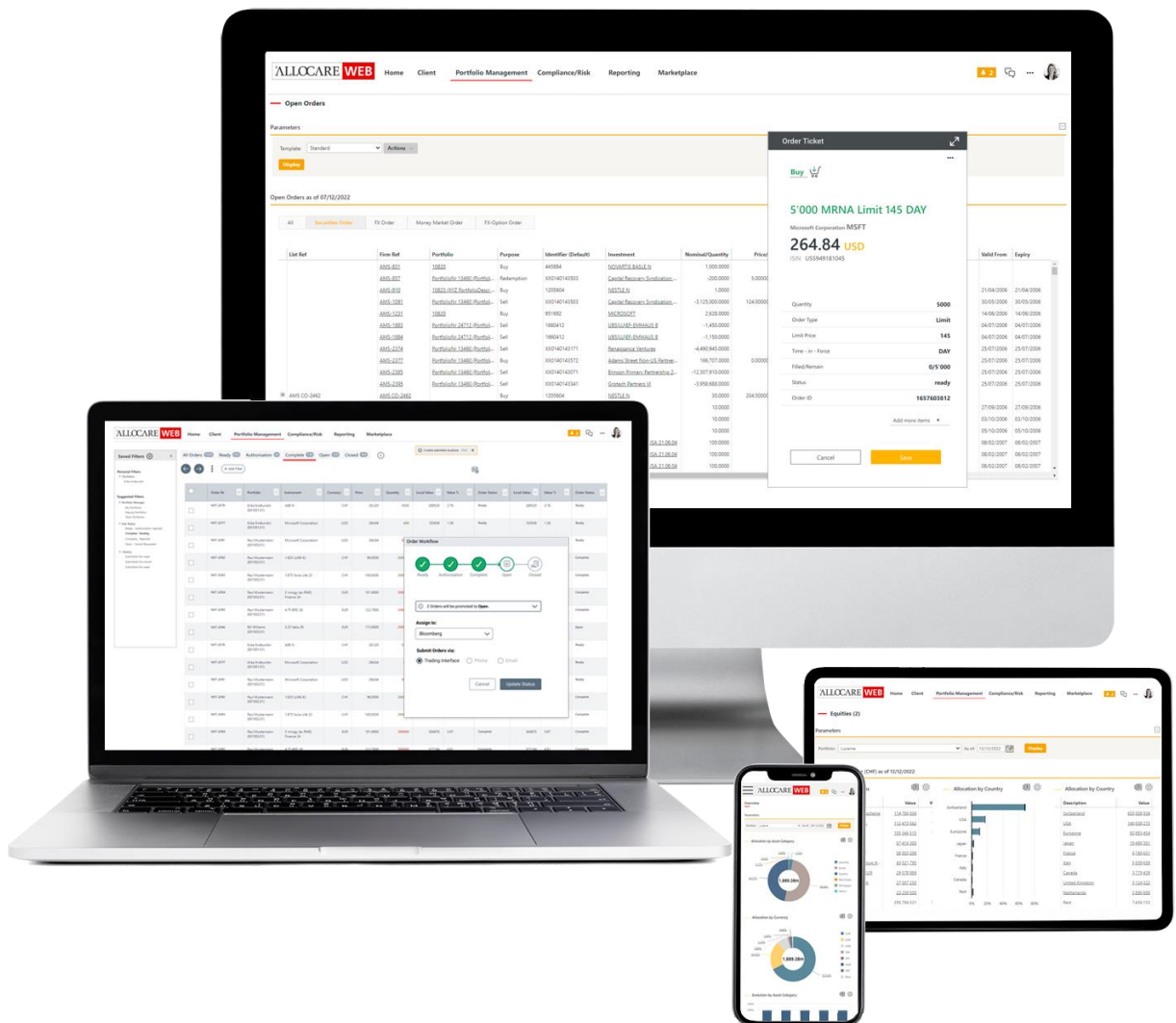


Note: The selection has no impact on Constraint Calculation, checks will still consider all Decided Orders.

Allocare WEB

WEB Next - Redesign Look & Feel

For release 23.3, we are working to make Allocare WEB easier to use and more visually appealing with a new color scheme. A more streamlined navigation organized by topic will clearly summarize your main functions. Graphical elements will help you to quickly grasp the operation.



A new design with focus on user guidance and clarity is in progress. Colors will give you clear feedback on needed interactions. Graphical elements will give self-explanatory hints about functionalities and the status of tasks. The design will adapt to you, whether you are working on your desktop PC or on your mobile.

The home area as a central contact point will provide you with clear dashboards with summaries of the individual functions. The revised navigation will support you to find your way faster. Optimized for relationship and portfolio management, compliance and reporting, the functions will be rearranged. In the marketplace you will find a selection of third-party applications which we have integrated for you.

A new presentation format will support you in managing your tasks. Clear recommendations for the next step will make the application easier to use. A visual representation of the workflow will help you better monitor the progress of each task. Minimize input screens will help you to focus on the essentials.

System Requirements

Operating Systems

Allocare AMS Release 22.9 supports the following operating systems for workstations:

- Windows 11
- Windows 10 (Dark Mode Theme only works properly from version 1809 onwards.)

Allocare AMS Release 22.9 supports the following server operating systems running Microsoft SQL Server or Internet Information Services:

- Microsoft Windows Server 2019
- Microsoft Windows Server 2016

Database Management Systems

Allocare AMS Release 22.9 supports the following database management systems:

- Microsoft SQL Server 2019 (Cumulative Update 3)
- Microsoft SQL Server 2017 (Cumulative Update 19)
- Microsoft SQL Server 2016, Service Pack 1
- Microsoft SQL Server 2014, Service Pack 1
- Microsoft SQL Server 2012, Service Pack 3

Web Servers

Allocare WEB Release 22.9 will run on Microsoft IIS 7.0 up to 10.0.

- Microsoft .NET Framework 4.6.1 (ASP.NET 4.6.1)

Web Browsers

Allocare WEB Release 22.9 supports the following web browsers:

- Microsoft Edge (Chromium)
- Firefox
- Chrome
- Safari 11 on Macintosh

Note: Microsoft Internet Explorer is no longer supported since Allocare WEB Release 21.3.

Installation Requirements

The following information is for people responsible for the installation of the Allocare AMS application.

Microsoft Visual C++ Redistributable

A required prerequisite to run the Allocare AMS application suite is *Microsoft Visual C++ 2019 Redistributable (x64) - 14.28.29914* which must be available on a client machine.

The Allocare WEB (Service) requires the 64-Bit Package i.e. *Microsoft Visual C++ 2017 Redistributable (x64) – 14.12.2581.0*.

The Allocare WEB (Service) requires the 64-Bit Package i.e. *Microsoft Visual C++ 2019 Redistributable (x64)*.

For legacy report engines (Crystal Reports, Active Reports) the 32-Bit Redistributable must also be installed *Microsoft Visual C++ 2019 Redistributable (x86) - 14.28.29914*.

These will be automatically installed when using the **Setup** executable provided on the installation CD. When the Setup executable is not used the redistributable has to be installed manually or the files have to be copied from the CD. Dependencies: All files in the 'AMS folder' support 64-Bit, the 'x86' subfolder contains legacy components (supporting 32-Bit).

Universal C Runtime

A second required prerequisite is the *Update for Universal C Runtime in Windows (KB2999226)*. *Microsoft Visual C++ Redistributable* installation also includes this update and therefore no further installation step is required.

When Allocare AMS is installed by copying all files from the installation CD, this update must be installed on the system manually (if not already installed by the Windows Update).

Microsoft .NET Framework

A required prerequisite to run the Allocare AMS application suite is Microsoft .NET Framework 4.6.1 which must be available on a client machine.

It will be automatically installed when using the Setup executable provided on the installation CD.

When the Setup executable is not used the redistributable has to be installed manually.