



Release Information

Allocare AMS & Allocare WEB

Release 23.9

January 2024

Copyright and Comments

Copyright (c) 2024 by Allocare AG, Kantonsstrasse 3, CH-6246 Altishofen/Switzerland.

www.allocare.com

info@allocare.com

Information contained in this document was carefully written after thorough research and has been reviewed for correctness. Nevertheless mistakes can occur. If one is encountered, we kindly request you to report to Allocare Support for rectification. In no event Allocare AG, or any employees of Allocare AG, shall be liable for any damages arising out of mistakes or misunderstandings contained in the information of this document.

The name Allocare and the Allocare logo are trademarks of Allocare AG, Altishofen. Other hardware and software product names referenced in this document are trademarks of the respective company.

This document or any part of it is not allowed to be distributed or reproduced in any form without the explicit consent of Allocare AG.

Introduction

This Release Information describes the most important new functionalities delivered by Allocare AMS & Allocare WEB Release 23.9. The delivery of the software releases is handled via support or project managers.

For additional information regarding the functionality, please contact our support or our sales:

Support

Phone: +41 62 748 65 55

Mail: **support@allocare.com**

Sales

Phone: +41 62 748 65 65

Mail: **sales@allocare.com**

Contents

Overview	3
Allocare AMS	4
Order Interface – BDL (Banque de Luxembourg)	4
Order Interface – V-Bank.....	5
Allocare ESG – Method Editor	6
Allocare Portfolio - Usability.....	8
Allocare Administration	10
Allocare Executive.....	10
Allocare WEB	11
WEB Next – Order Management View	11
System Requirements	12
Installation Requirements.....	13

OVERVIEW

Allocare AMS

Order Interface – BDL (Banque de Luxembourg) / V-Bank (FIX based)

We continue to expand our FIX network and introduced two new connections that allow you to trade directly with BDL and V-Bank. This gives you more flexibility over your trading activities.

Allocare ESG – Method Editor

Our new ESG Method Editor allows you to select from a variety of data points, select a calculation type and implement your own ESG methods quickly and easily. This flexible solution adapts to the specific requirements of your clients and changing market conditions.

Allocare Portfolio - Usability

These new features improve the usability of Allocare Portfolio:

- Background Printing
- Title Bar - Session ID
- Template - Show Options on Load
- Ribbon Customization – Import and Export

Allocare Administration

We have overhauled the user management system in Allocare Admin, making it easier to search for and manage your users. Rather than using filters, you can now perform targeted searches from the start.

Allocare Executive

We have added a new feature that allows you to delete constraint statistics via job execution, without having to use the desktop application. This is particularly useful for regularly scheduled batch jobs.

Allocare WEB

WEB Next – Order Management View

When you select an order, a brief summary of the most important fields will now open first, allowing you to quickly assess the information without having to navigate to a separate screen. You can also switch to the maxi mask with a single click, which gives you all the detailed information grouped into individual sections.

System Requirements

Information about supported operating systems, database management systems, web servers, web browsers.

Installation Requirements

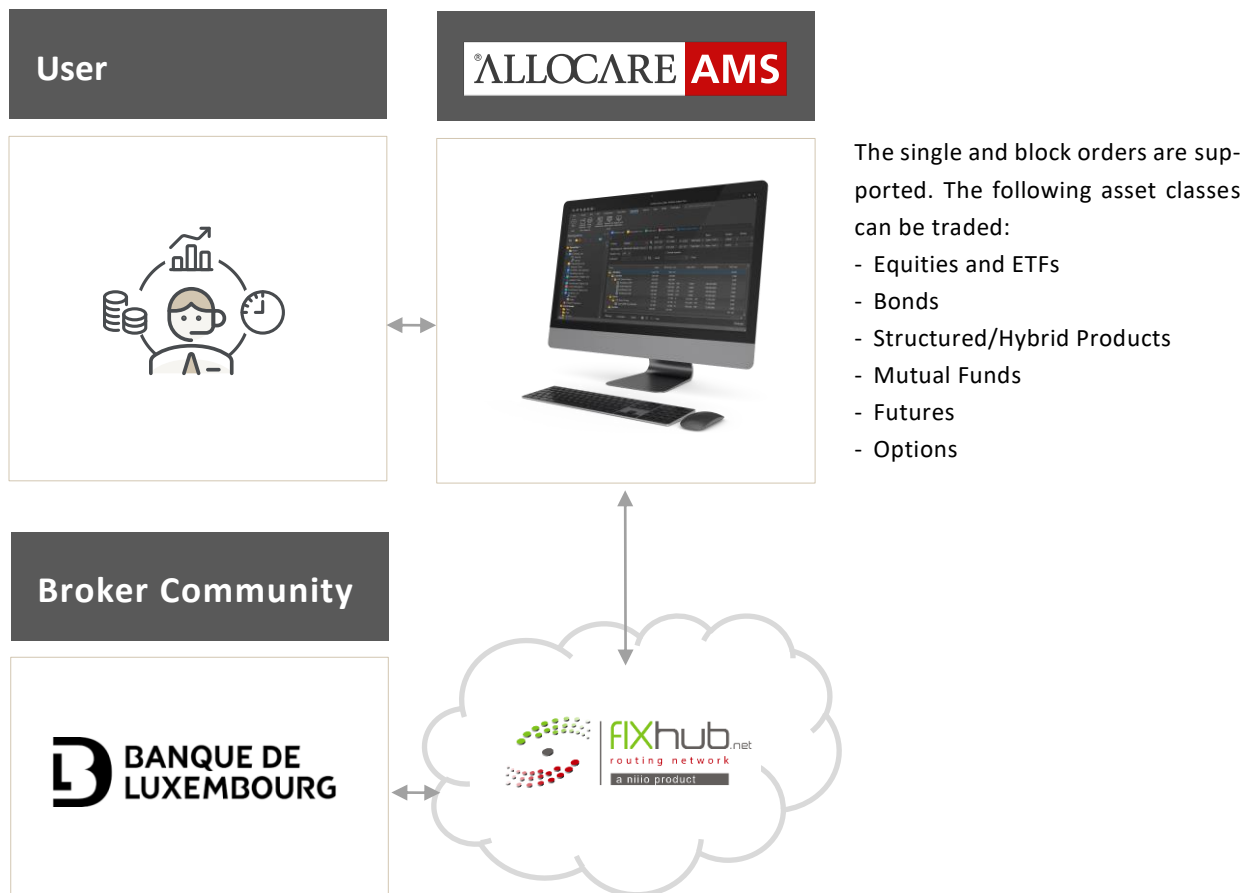
Information about required prerequisite for the installation of Allocare AMS and Allocare WEB.

Allocare AMS

Order Interface – BDL (Banque de Luxembourg)

Allocare AMS now integrates seamlessly with the BDL via **FIXhub.net***, providing you with the capability to execute trades across a diverse portfolio of assets including stocks, bonds, structured products, funds, futures, and options. This connection through our portfolio management system ensures swift and dependable trade execution. By streamlining trading workflows

and facilitating the electronic transmission of order acknowledgments and executions, our system minimizes errors and accelerates the settlement process. This integration not only aims to lower the overall cost associated with trade execution but also simplifies the process through a secure hub connection, significantly reducing installation efforts and the need for continuous monitoring.



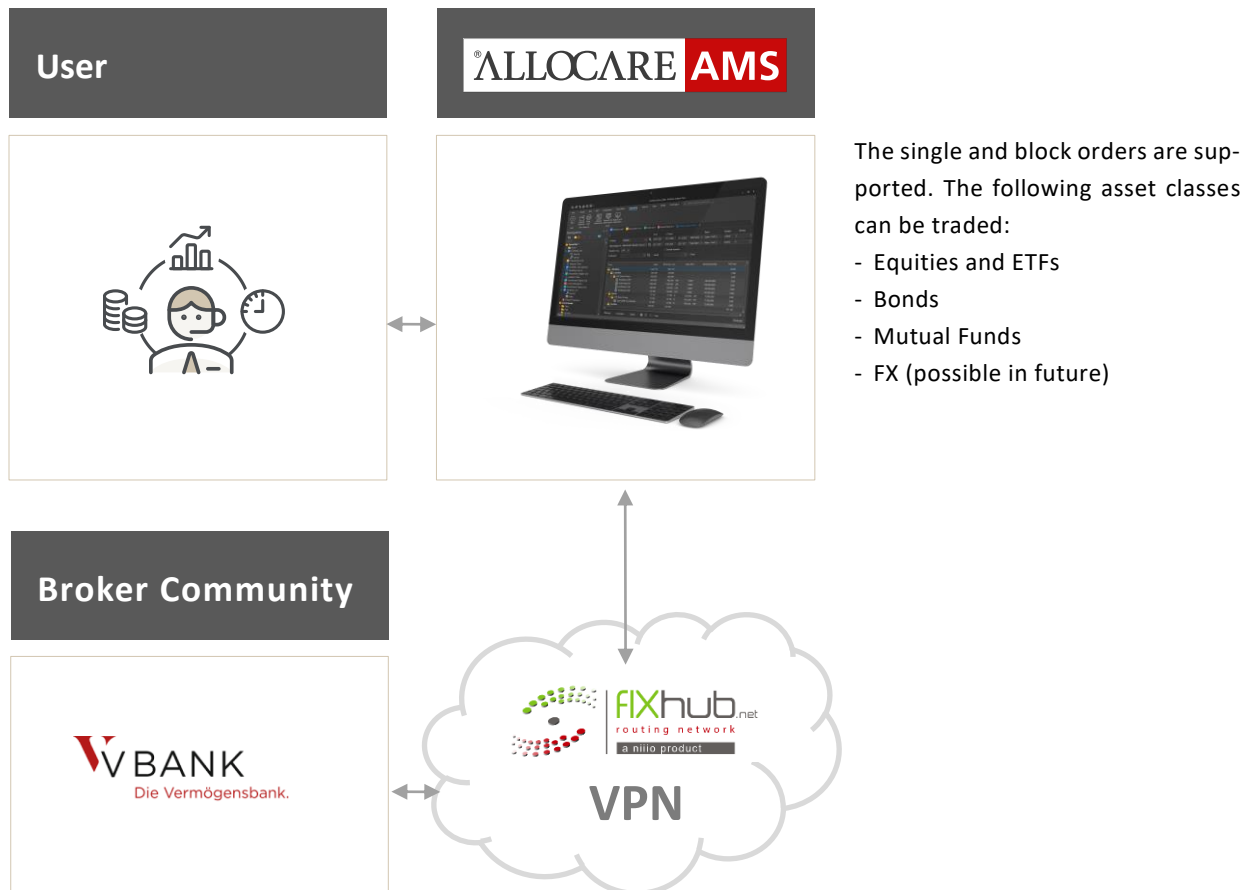
This functionality is separately licensed.

* FIXhub.net is a routing network, which provides Allocare AMS with a cost effective, reliable and simple point of access to a multitude of sell side trading institutions/venues.

Order Interface – V-Bank

Allocare AMS now boasts a direct connection to V-Bank, utilizing the robust FIX Interface for seamless integration. This specialized link provides you with the capability to trade shares, bonds and funds efficiently. Whether you choose to connect through the **FIXhub.net network or a secure VPN**, our system ensures fast, reliable, and secure trade execution. By leveraging the FIX protocol's versatility, we have tailored

our solution to focus on these specific asset classes, optimizing your trading strategy with V-Bank. This streamlined connection is designed to reduce operational complexities and costs while also ensuring that installation and ongoing monitoring are kept to a minimum allowing you to focus on 'what matters most' - effectively managing your investment.



This functionality is separately licensed.

Current List

Baader
BDL
UBS Europe SE (Zurich)
V-Bank
 ...current list on request

Allocare ESG – Method Editor

Definition of own ESG methods

At Allocare AMS, environmental, social and governance (ESG) factors are becoming increasingly important for investment decisions. To help you meet the specific requirements of your clients and adapt to changing market conditions, we have developed a new ESG Method Editor.

The ESG Method Editor is a flexible solution that allows you to select from a variety of calculation types and data points to implement your own ESG methods quickly and easily. This means that you can customize your ESG analysis to suit your specific needs and preferences, and create unique methods that reflect your investment philosophy.

Importantly, the ESG Method Editor is designed to be user-friendly and easy to use. You do not need any programming skills or technical expertise to create your own ESG methods - just select the data points and calculation types that you want to use and the editor will do the rest.

For example, you might choose to focus on certain ESG factors that are most relevant to your clients' portfolios, or you might use different calculation types to prioritize different aspects of ESG performance. The possibilities are endless, and the ESG Method Editor gives you the freedom and flexibility to create methods that work best for you.

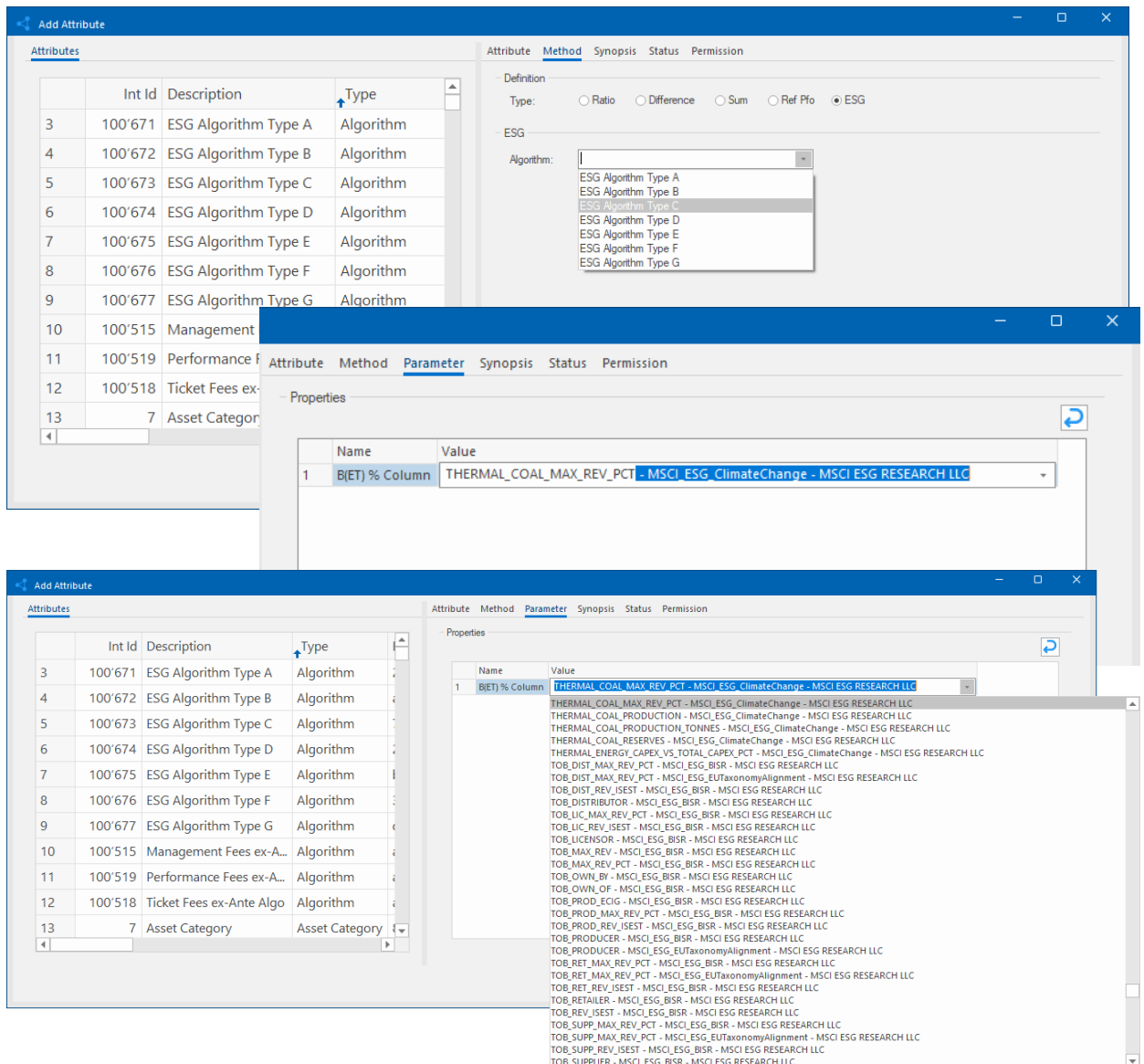


Figure 1: ESG Method Editor – Methods and Attributes

Customizable ESG Method Integration for Advanced Compliance Monitoring

These custom-created methods can be clearly displayed and thoroughly evaluated within the Analysis Tree. Furthermore, ESG methodologies can be seamlessly integrated into constraints for informed investment decisions. They enhance reporting by providing a

clear overview of the ESG performance of your investments. Additionally, these methods are fully deployable on the web, enabling transparent and accessible communication of your ESG strategies.

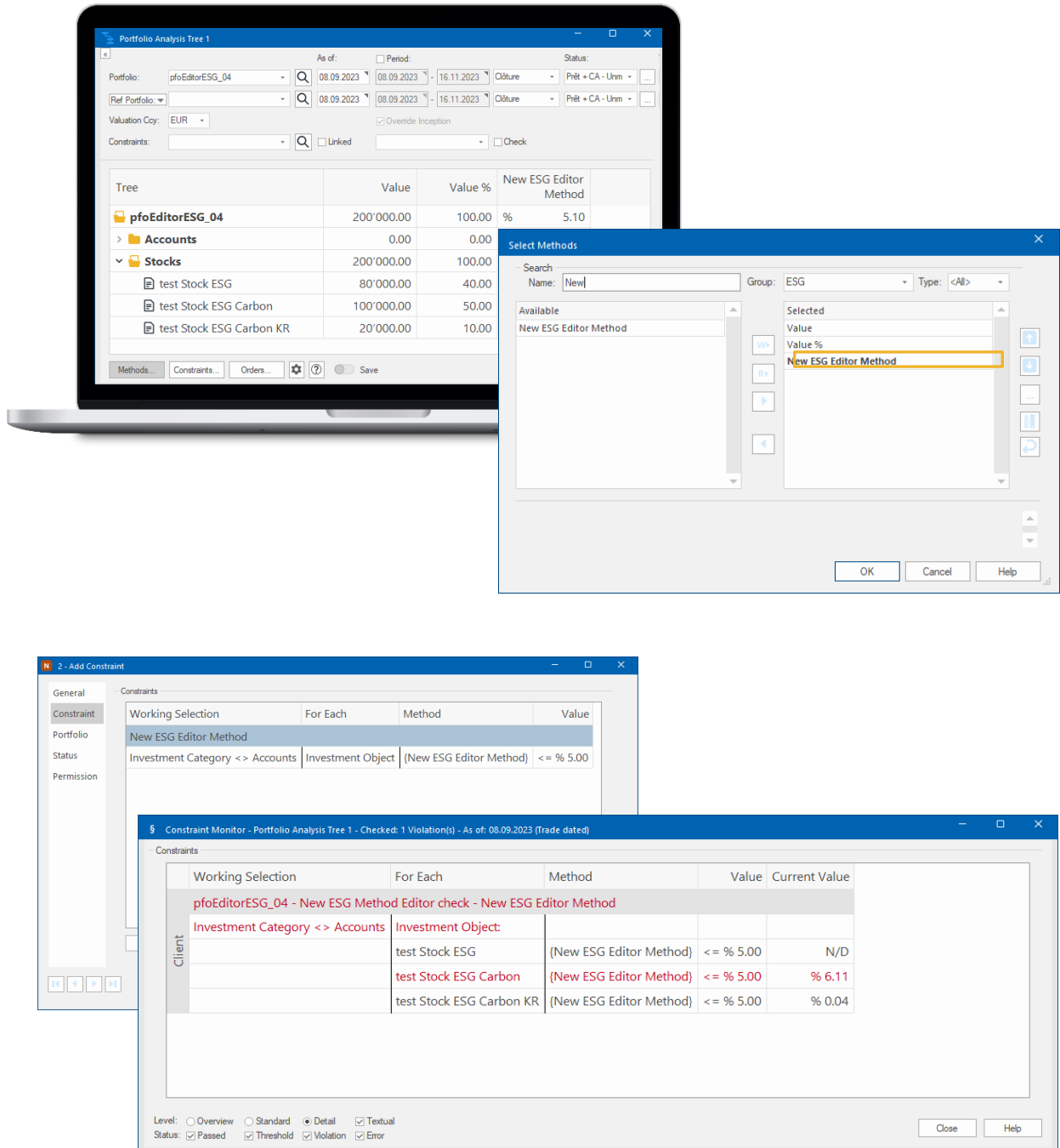


Figure 2: ESG Method Editor –Select methods and Constraint Monitor

Allocare Portfolio - Usability

Background Printing

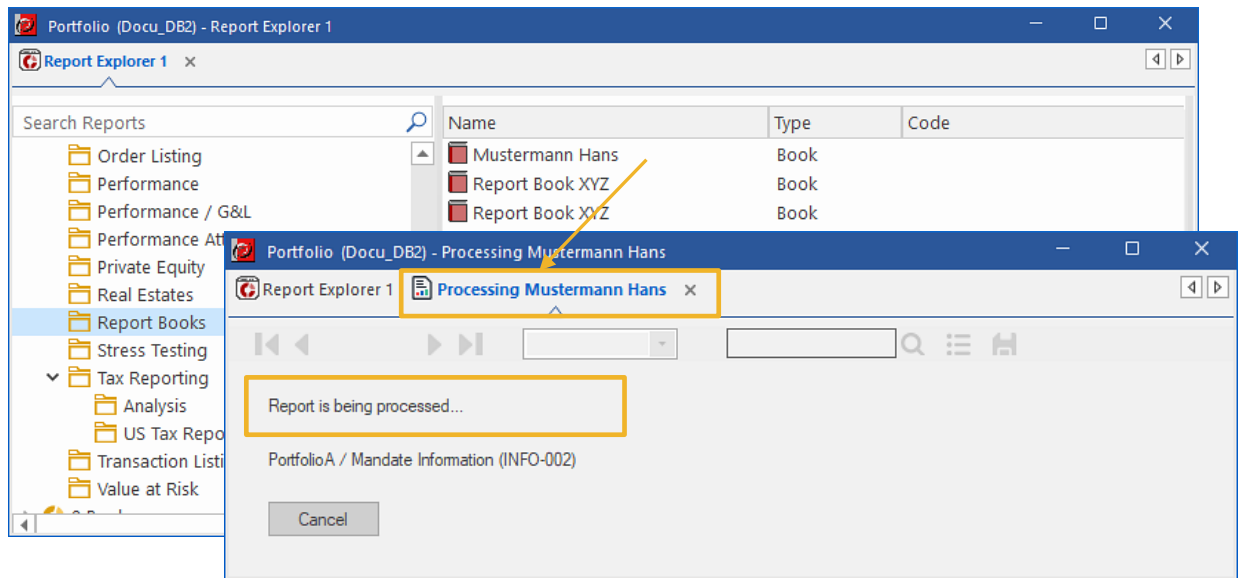


Figure 3: Preparing the report in the background

When printing large reports, the application was blocked until the selected report was created. Now it is possible to create reports in the background and continue working. As soon as you click on Preview/Printer/File in the print dialogue, the creation of the report is processed in a separate tab.

Title Bar - Session ID

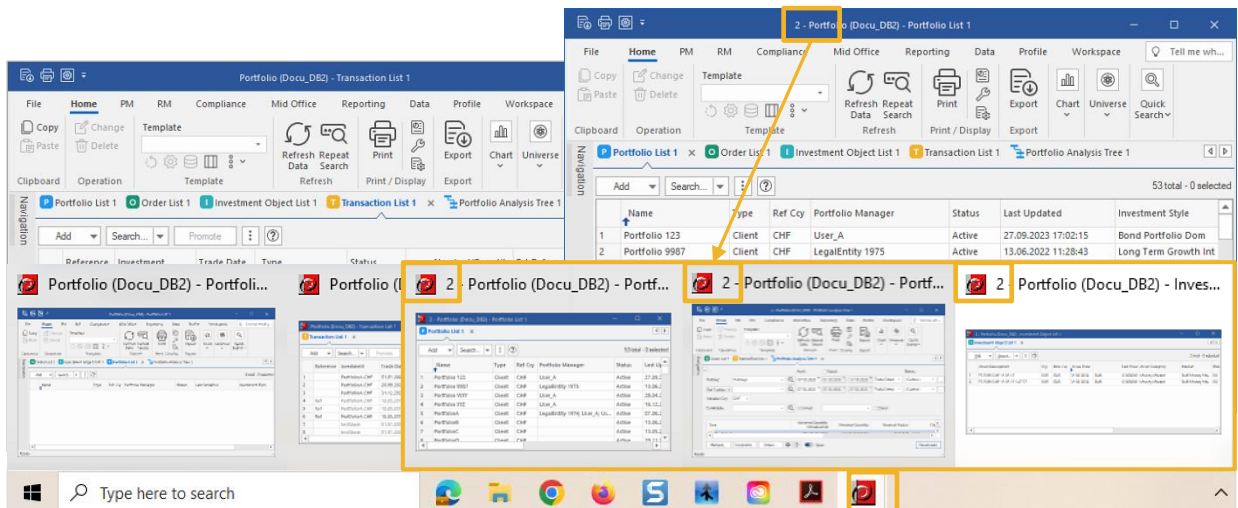


Figure 4: Allocare AMS assigns unique numbers to open sessions and application windows (2,3,...)

If you frequently work with multiple sessions in Allocare AMS, you know how difficult it can be to keep track of which application windows belong to which session. To solve this issue, we have added a new window numbering feature that makes it much easier to identify and manage your open windows. With numbering, each application window in Allocare AMS is assigned a unique number that corresponds to the session it belongs to. This means that you can easily identify which application windows belong to the same session, even if they are spread across multiple monitors or desktops.

Template - Show Options on Load

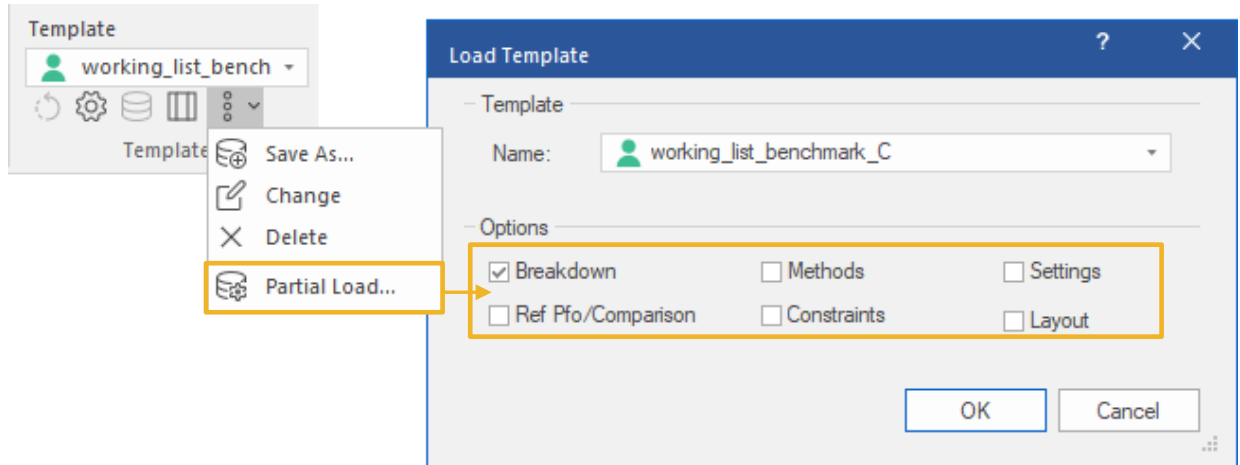


Figure 5: Loaded Template Options

In Allocare AMS, templates are a powerful tool for quickly saving your predefined settings and layouts. However, in the past, when you loaded a template, you had to take everything that was included in the template, even if you only needed some parts of it. To address this issue, we have added a new feature that allows you to selectively load parts of templates. Therefore, as an example, multiple users can load the same breakdown from one template, but still use their favourite methods.

Ribbon Customization – Import and Export

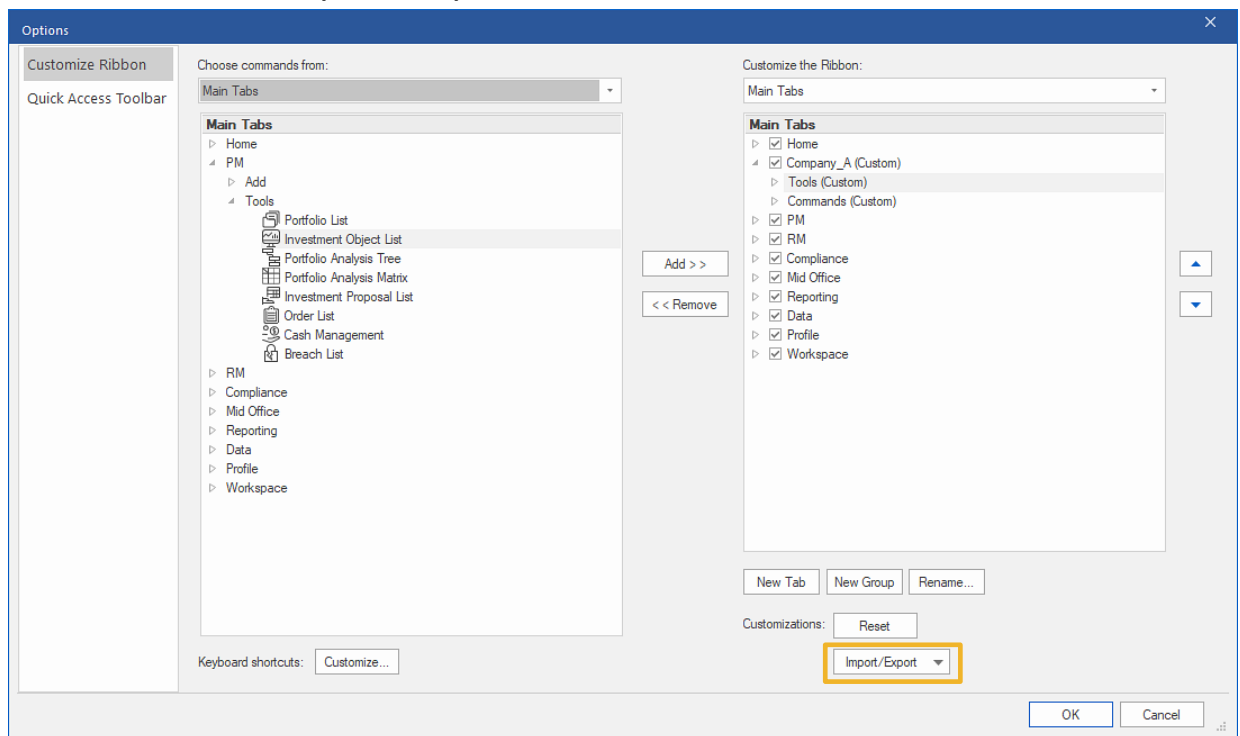


Figure 6: Import and Export of customized Ribbon

Since release 22.9, it is possible to customize ribbons to suit your specific needs and preferences. We have added a new feature that allows you to import and export ribbons. This means that you can transfer your preferred settings and shortcuts between different computers and accounts more easily.

Allocare Administration

User Manager

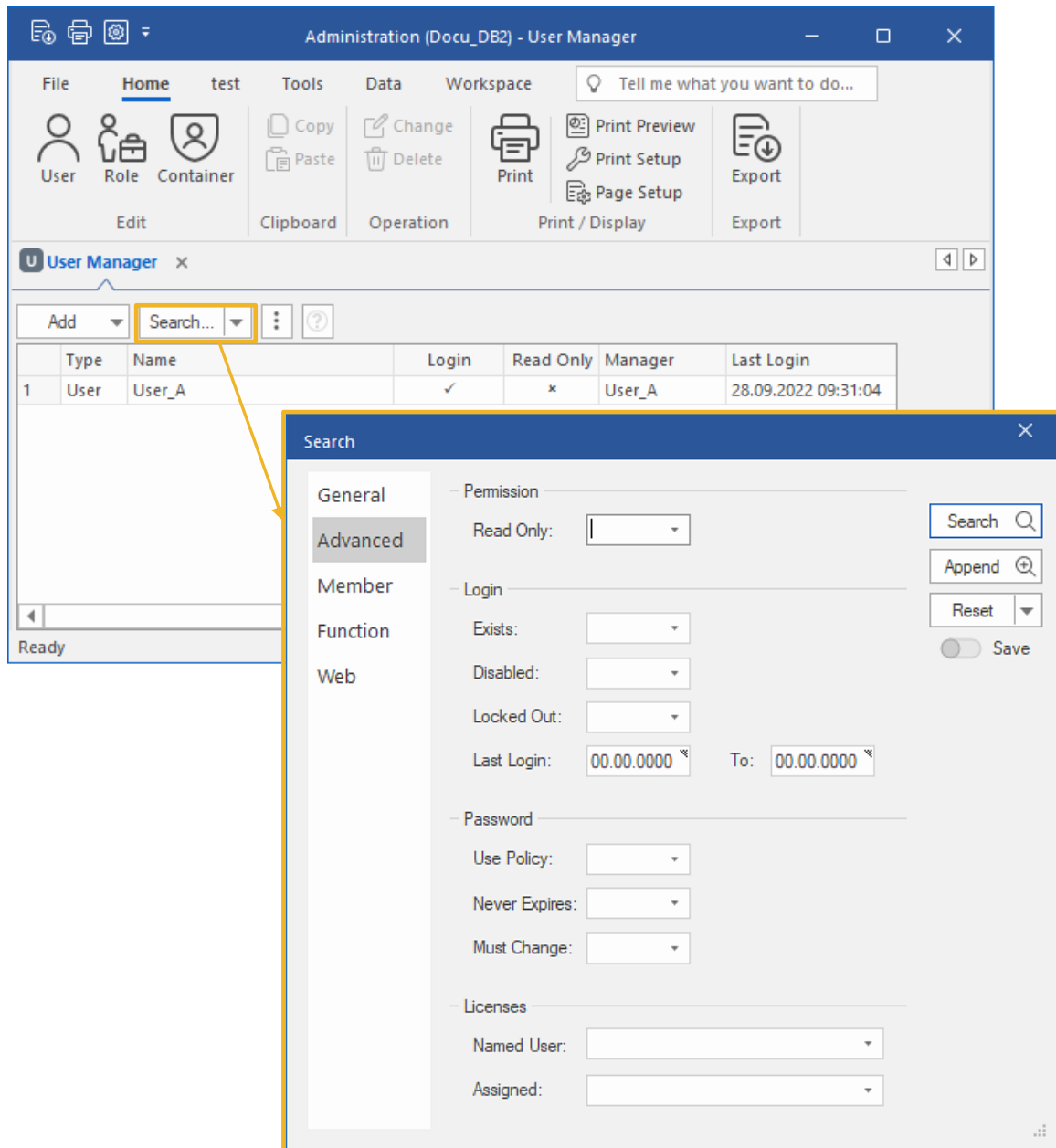


Figure 7: New Searches for assigned Licences

A comfortable search dialog is now available in Allocare Administration to better filter and search users and groups. In the dialog, several search filters are available on several pages, e.g. Name, Manager, Show deleted or by permission such as Read only, Password, Login, License (assigned licenses, named user license), Roles, Member, Function, Web, etc.

Allocare Executive

In Allocare AMS, constraint statistics are an important tool ensuring your portfolios meet your specific investment goals and constraints. However, in some cases you may need to delete constraint statistics or correct errors. To address this need, we have added a new feature to Allocare Executive that allows you to delete constraint statistics quickly and easily. This means that you can remove constraint statistics that are no longer needed or that are causing issues in your portfolio directly from a batch job.

Allocare WEB

WEB Next – Order Management View

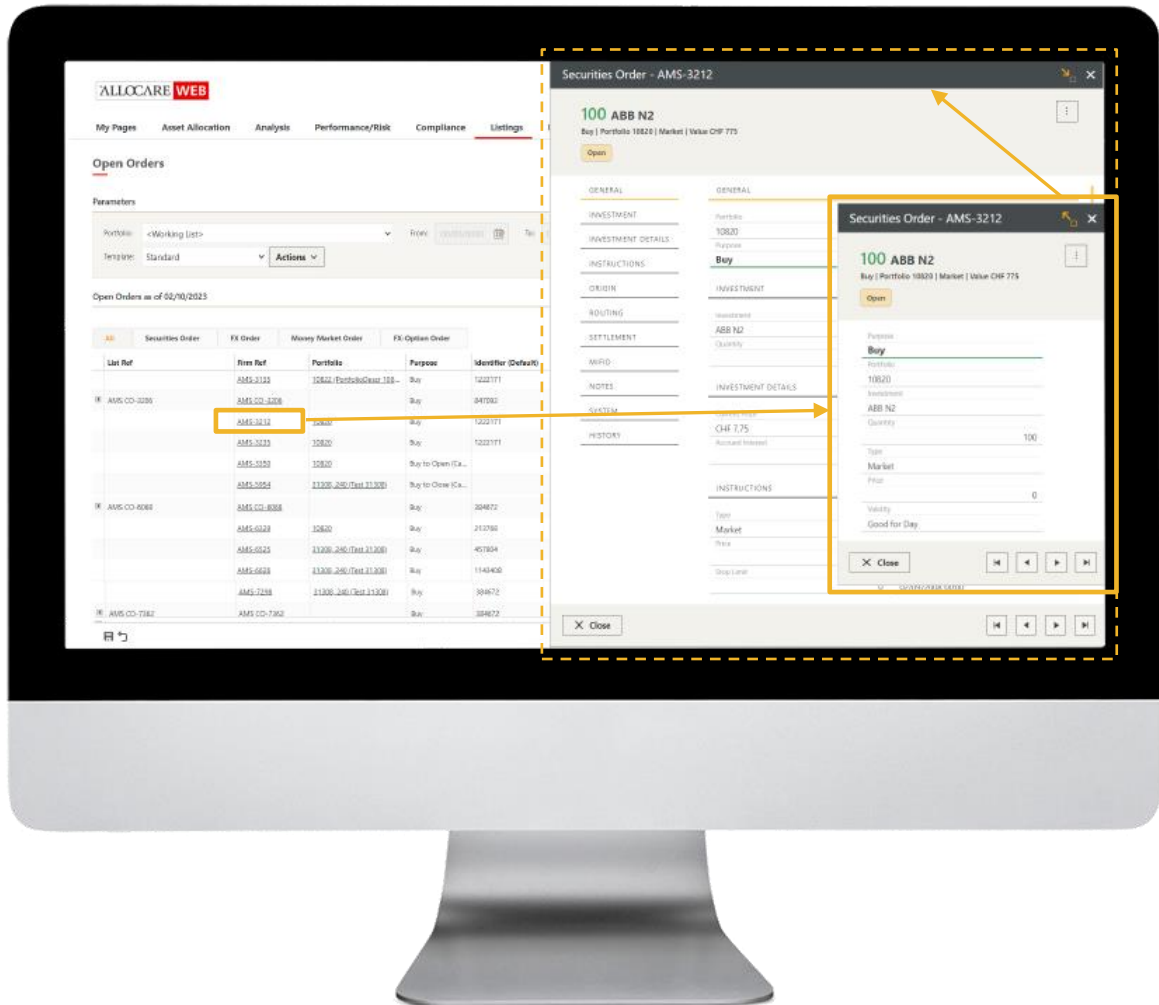


Figure 8: The order ticket with the initial minimized view and the scaled appearance

We changed the way that order tickets are displayed in Allocare WEB. When you select an order, a brief summary of the order ticket, as well as the most important fields at a glance will now open first. The order ticket can be displayed directly next to the order list, and you can navigate between orders with a single click.

By providing a brief summary of the most important fields in the mini mask, you can quickly assess the information of your orders without having to navigate to a separate screen.

With a single click, you can switch to the maxi mask, which gives you all detailed information grouped into individual sections. You can configure the view to suit your specific needs and preferences.

The full maxi mask provides all of the detailed information that you need to manage your orders effectively. By allowing you to customize the configuration of the sections, you can focus on the information that is most relevant to you and your investment strategy.

System Requirements

Operating Systems

Allocare AMS Release 23.9 supports the following operating systems for workstations:

- Windows 11
- Windows 10 (Dark Mode Theme only works properly from version 1809 onwards)

Allocare AMS Release 23.9 supports the following server operating systems running Microsoft SQL Server or Internet Information Services:

- Microsoft Windows Server 2022
- Microsoft Windows Server 2019
- Microsoft Windows Server 2016

Database Management Systems

Allocare AMS Release 23.9 supports the following database management systems:

- Microsoft SQL Server 2022
- Microsoft SQL Server 2019 (Cumulative Update 3)
- Microsoft SQL Server 2017 (Cumulative Update 19)
- Microsoft SQL Server 2016, Service Pack 1
- Microsoft SQL Server 2014, Service Pack 1
- Microsoft SQL Server 2012, Service Pack 3

Web Servers

Allocare WEB Release 23.9 will run on Microsoft IIS 7.0 up to 10.0.

- Microsoft .NET Framework 4.8 (incl. ASP.NET)

Web Browsers

Allocare WEB Release 23.9 supports the following web browsers:

- Microsoft Edge (Chromium)
- Firefox
- Chrome
- Safari on Macintosh

Note Microsoft ODBC Driver 18 for SQL Server is now supported.
Microsoft ODBC Driver 17.10.1 is installed by default.
Microsoft SQL Server Native Client 10.0 and 11.0 are no longer supported by Microsoft.

Installation Requirements

The following information is for people responsible for the installation of the Allocare AMS and Allocare WEB applications.

Microsoft Visual C++ Redistributable

A required prerequisite to run the Allocare AMS application suite is *Microsoft Visual C++ 2015-2022 Redistributable (x64) - 14.34.31931* that must be available on a client machine.

Allocare WEB Service also requires *Microsoft Visual C++ 2015-2022 Redistributable (x64) - 14.34.31931*.

For legacy report engines (Crystal Reports, Active Reports) the 32-Bit redistributable must also be installed *Microsoft Visual C++ 2015-2022 Redistributable (x86) - 14.34.31931*.

These will be automatically installed when using the Setup executable provided on the installation CD. When the Setup executable is not used, the redistributable has to be installed manually or the files have to be copied from the CD. Dependencies: All files in the 'AMS folder' support 64-Bit, the 'x86' subfolder contains legacy components (supporting 32-Bit).

Microsoft .NET Framework

A required prerequisite to run the Allocare AMS application suite and Allocare WEB (Service) is Microsoft .NET Framework 4.8 which must be available on a client or web server machine.

It will be automatically installed when using the Setup executable provided on the installation CD.

When the Setup executable is not used the redistributable has to be installed manually.